

Indoor Multi-band Direct. Antenna

Vertical Polarization

Half-power Beam Width

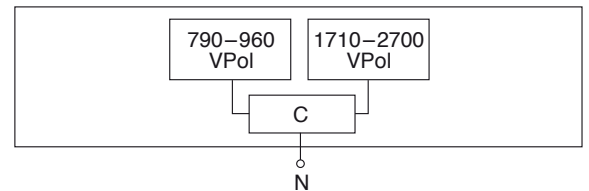
Integrated Combiner

790–960	1710–2700
V	V
90°	90°
C	

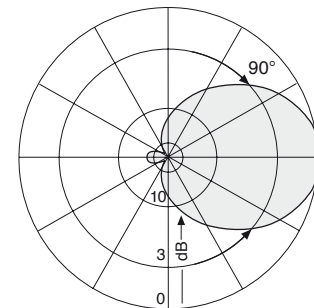
KATHREIN
Antennen · Electronic

VVPol Indoor 790–960/1710–2700 C 90° 7dBi

Type No.	800 10465
Frequency range	790 – 960 MHz / 1710 – 2700 MHz
Polarization	Vertical
Gain	Approx. 7 dBi
Half-power beam width	Horizontal: Approx. 90°
Impedance	50 Ω
VSWR	790 – 806 MHz: < 2.2 806 – 960 MHz: < 2.0 1710 – 2700 MHz: < 2.0
Max. power	50 W (at 50 °C ambient temperature)
Input	Cable RG 223/CU of 1m length, white, with N female connector
Protection class	IP 30
Weight	500 g
Packing size	363 x 152 x 62 mm
Height/width/depth	231 / 140 / 50 mm

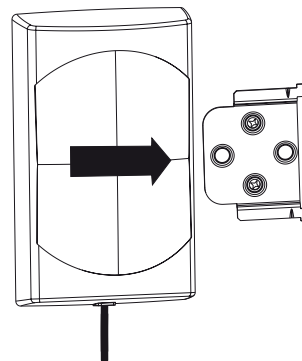
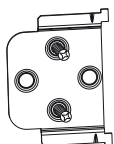


- Material:** Reflector: Aluminum.
Radome: High impact polystyrol, colour: White.
Additional painting is possible.
Mounting plates: Stainless steel.
- Mounting:** Two holes of 6 mm diameter in the mounting plate.
Screws are not supplied.
Avoid stressing the cable.
No stress on the hexagonal crimp.
Minimum cable bending radius: 30 mm without tensile load.
- Grounding:** All metal parts inclusive the inner conductor are DC grounded.
- Available accessories:** Broadband power splitters (694 – 3800 MHz) and tappers (790 – 2500 MHz).

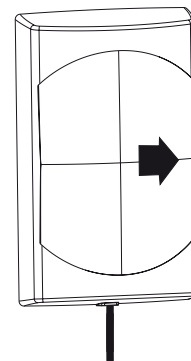


Horizontal Pattern

Mounting:



Align the antenna over the attachment plate.



Pull the antenna to the stop.

Mount the attachment plate to the wall using two screws of 4 mm diameter in the position as indicated.

936.3036/b Subject to alteration.