



Key Features and Benefits

Instant System Extension

Combining 6 dBi of gain from the built donor and service antennas and the system module gain of 70dB, Pisces can improve the 3G signal up to 82dB! Along with UL/DL output power of +13/+10dBm, it can effectively cover a variety of smaller indoor areas.

Plug & Connect

Installation has never been easier! Just plug Pisces in and enjoy instant 3G coverage extension.

Integrated LED Display

For user convenience, a digital LED display provides power and alarm status. Additional two sets of LED to display Received Signal Strength Indication (RSSI) and isolation so an user can locate the best location for the unit to be placed.

Isolation Cancellation System with AGA

Say good bye to oscillation problem! PS-2200's 25dB isolation cancellation makes donor and service antennas in one unit possible. Should isolation be less than perfect due to where Pisces is placed, AGA will automatically reduce the gain.

Network Safety

Automatic Gain Control (AGC) function ensures the unit does not surpass its intended output power and eliminate signal spikes that may interfere with base stations.

Configuration with OMT

Configure UMS channels on PS-2200 via Coiler's OMT software. Also monitor isolation, gain and output power in precise numerical value via OMT.

Service Multiple Areas

Need service in more than one area? No problem! Pisces comes with antenna extension port so multiple rooms can benefit from one unit.

Optional External Donor Antenna & Wall Mount

Should the RSSI level be too weak indoors, built in donor antenna can be disconnected and external cabling and antenna can be used to locate better signal location. When external cabling is used, wall mount bracket can be used to secure the stability of the unit.

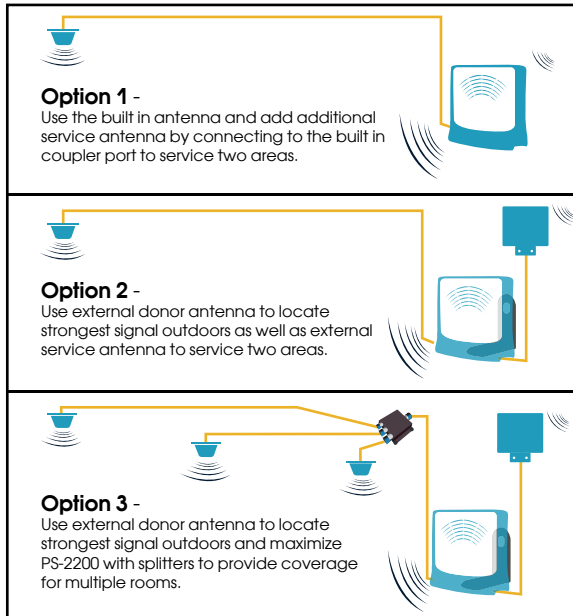
Pisces: Plug & Fish Out Signal

Pisces, or PS-2200 is Coiler's Pico level ICS (Isolation Cancellation System) repeater. ICS technology enables the Pisces to be equipped with built in donor and service antenna so getting the Pisces up and running is as easy as plugging in the power. With intuitive LED indicators, an average mobile phone user can place the PS-2200 at the best signal location for optimal performance. Simple and complete, the PS-2200 digital ICS repeater is an unique offering for carriers to solve the 3G coverage problems of their clients instantly.

	900	1800	2100
Soho	SH-900 10dBm/0dBm 55dB AT-900 7dBm 60dB	SH-1800 10dBm/0dBm 55dB	SH-2200 10dBm/0dBm 55dB AT-2200 7dBm 60dB
Pico	SB-900 10dBm 60dB VB-900 18dBm 70dB	SB-1800 10dBm 60dB VB-1800 18dBm 70dB	SB-2200 13dBm 65dB PS-2200 13dBm/10dBm 70dB VB-2200 18dBm 70dB
Mini	BR-900 20dBm 80dB	BR-1800 20dBm 80dB	BR-2200 20dBm 80dB
Micro	CR-900 30dBm/33dBm 90dB		CR-2200 23dBm/37dBm 90dB
Macro	AX-900 29dBm/30dBm 95dB		AX-2200 23dBm/43dBm 100dB

*The above products are also available in dual band models
* Coiler also offers an extensive portfolio of band selective repeaters

External Antenna Options



Note: wall mount bracket available for repeater stability when external cabling is used (see example in option 2 & 3).

Dimensions

Top View



Front View



(All Measurements in Millimeters)

Specifications

Electrical:

Frequency Range	Uplink: 1920 ~ 1980MHz Downlink: 2110 ~ 2170MHz
Bandwidth	5/10/15MHz
Module Linear Gain (UL/DL)	70dB
System Gain (UL/DL)	
with Embedded Antennas	<82dB
Out of Band Gain	3GPP TS 25.143
Gain Adjustment (UL/DL)	50 ~ 70dB (in 1dB steps)
AGC Range	≥ 25dB
AGA Range for Isolation	≥ 25dB
Gain Flatness	≤ ± 1.5dB
Frequency Stability	≤ 0.01 ppm
Output Power (UL/DL)	+13dBm / +10dBm
Max. I/P Without Damage	≥ +10dBm
EVM	≤ 12.5% RMS
Spurious Emission	3GPP TS 25.143
Return Loss	≤ -14dB
Group Delay	≤ 6μs
Noise Figure @ Full Gain	≤ 6dB
@ Min Gain	≤ 8dB
Power Consumption	18W
System Impedance	50Ω
PCDE	≤ -35dB
ACPR	3GPP TS 25.143
DL-UL Isolation	≥ 90dB
ICS Performance	G = I + 10dB
ICS Window Size	500ns
Power Requirements	6V/4A AC-DC Adaptor

Mechanical & Environmental:

Weight	≤ 3kg
Dimensions	183 x 190 x 105mm
Operating Temperature	0°C ~ +40°C
Humidity	5 ~ 95%
Housing	IP20
Embedded Antenna Gain	6dBi per antenna
MS Couple Port Loss	10dB
Local Alarm Indication	Shutdown Alarm

Certifications and Compliance

CE	Radio:	EN 301 908 3GPP TS 25.143
	EMC:	EN 301 489
	Safety:	EN 60950-1
RoHS		2002/95/EC Compliant
WEEE		2002/96/EC Compliant

QW-05037; PS-2200 ver A0 (May 8, 2012 - Standard) - All data subject to change without prior notice